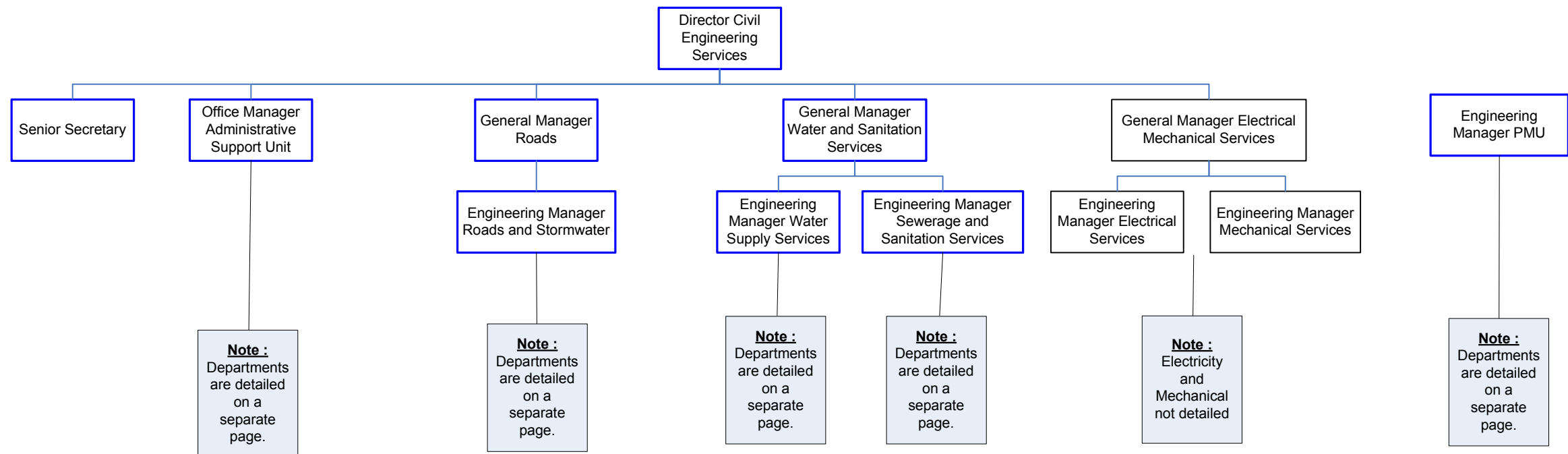


NOTES

Directorate Civil Engineering Services



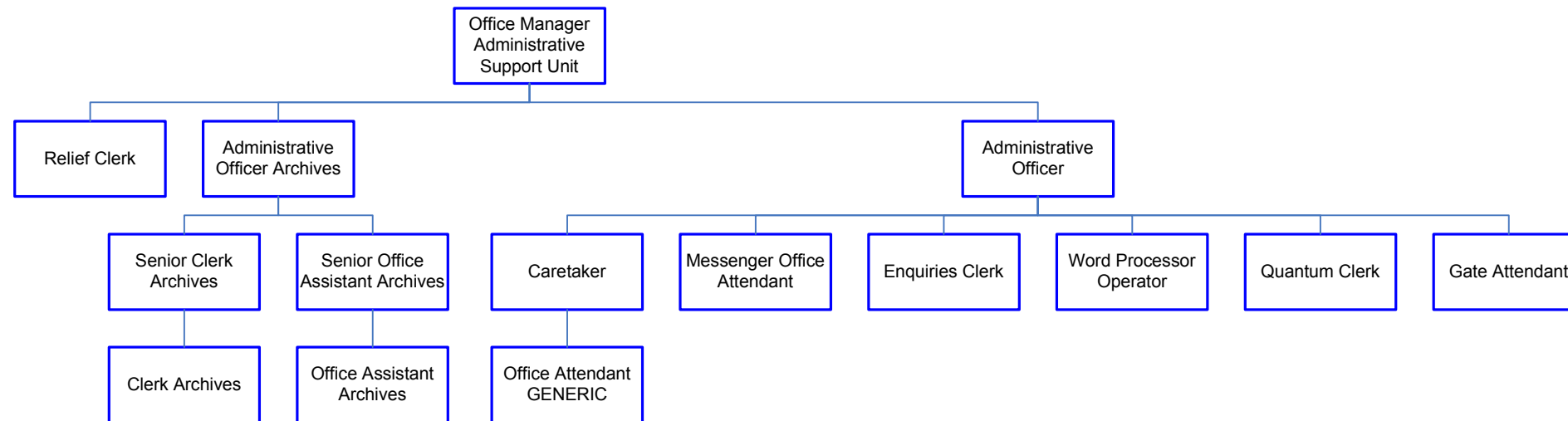
NOTE:

The size of the Municipality will determine how many of each Team/Post is required, i.e. there could be many of each post shown. Alternatively jobs can be combined in small Municipalities.

This is a schematic layout.

NOTES

Admin Support Engineering Services



NOTE:

The size of the Municipality will determine how many of each Team/Post is required, i.e. there could be many of each post shown. Alternatively jobs can be combined in small Municipalities.

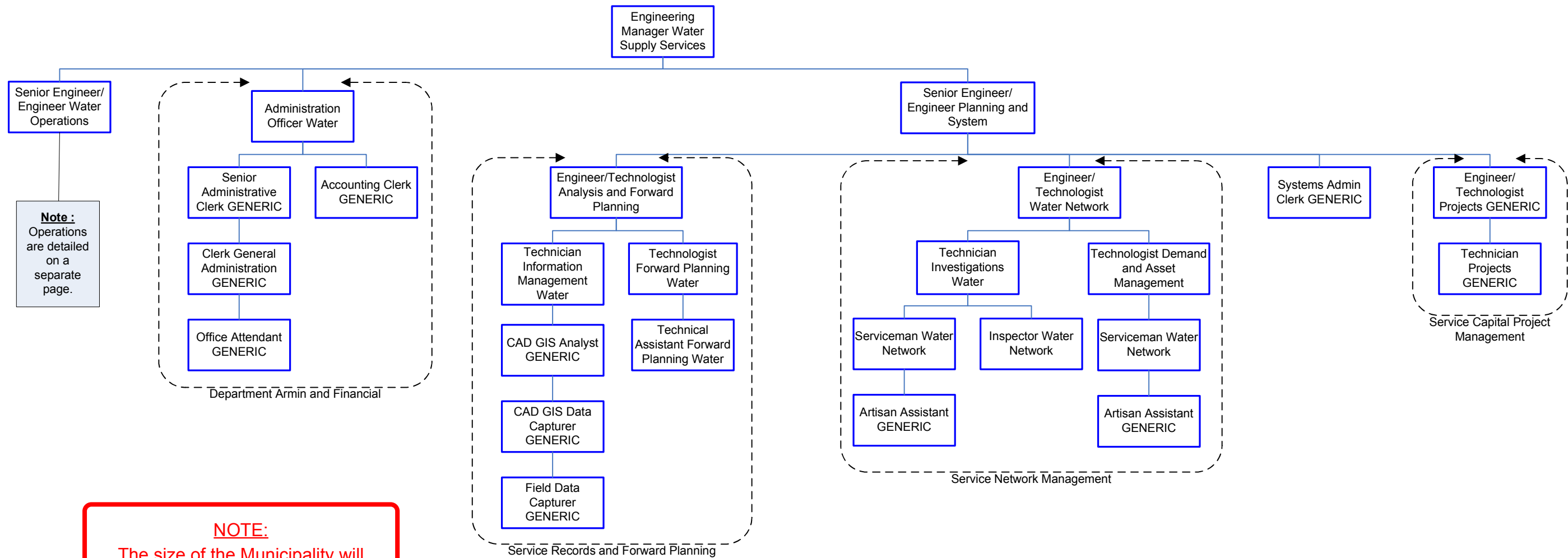
This is a schematic layout.

NOTE:

This is the administrative support within the Engineering Infrastructures Directorate. It must not be confused with the Corporate Services function of administration.

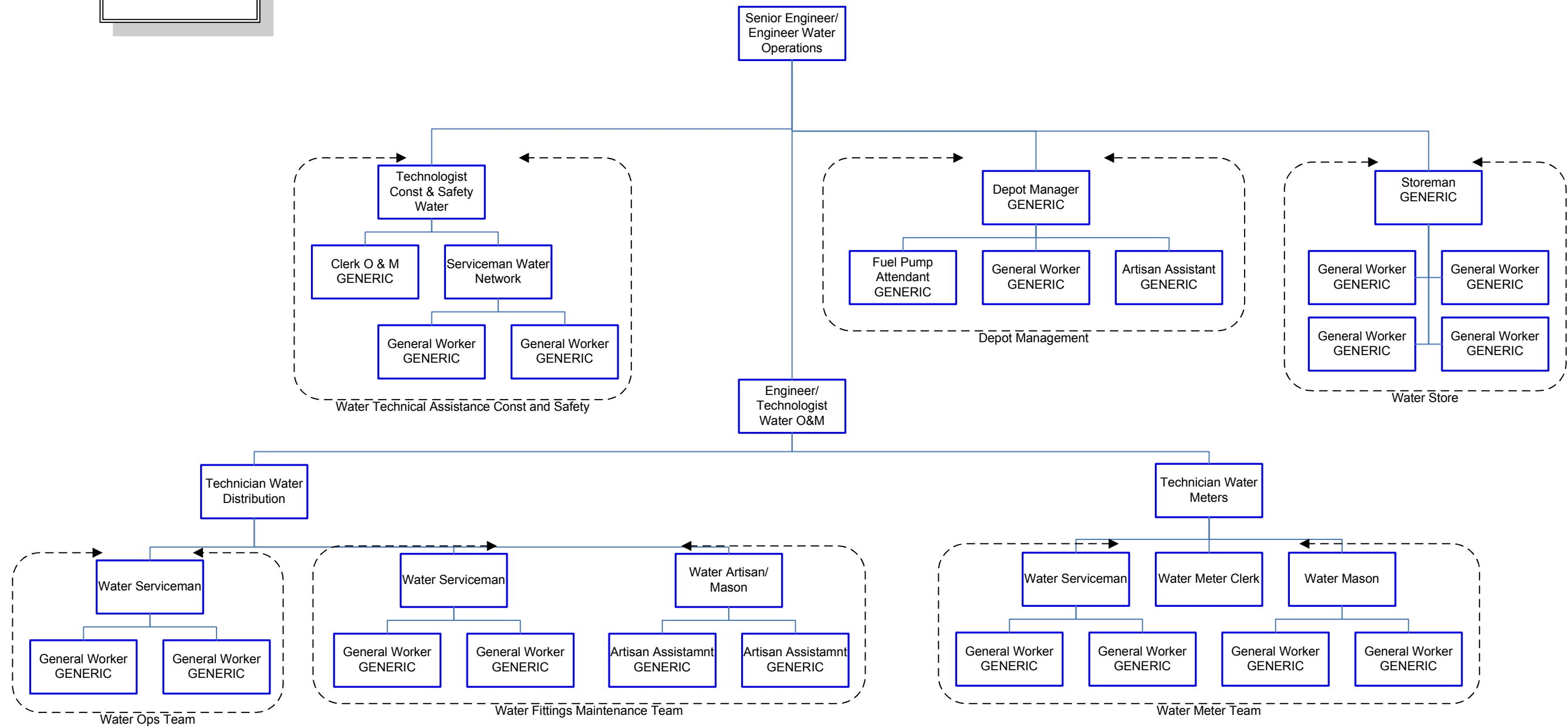
NOTES

Water Services Management and Planning



NOTES

Water Services Operations and Maintenance



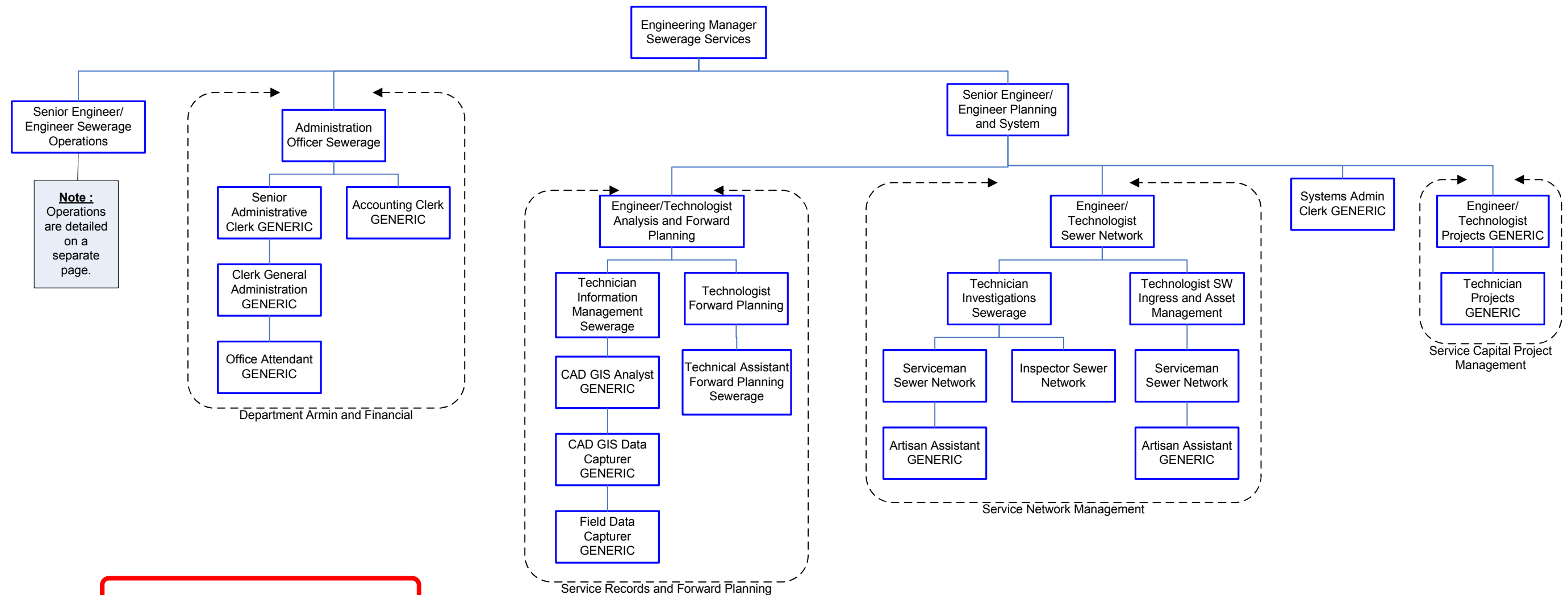
NOTE:

The size of the Municipality will determine how many of each Team/Post is required, i.e. there could be many of each post shown. Alternatively jobs can be combined in small Municipalities.

This is a schematic layout.

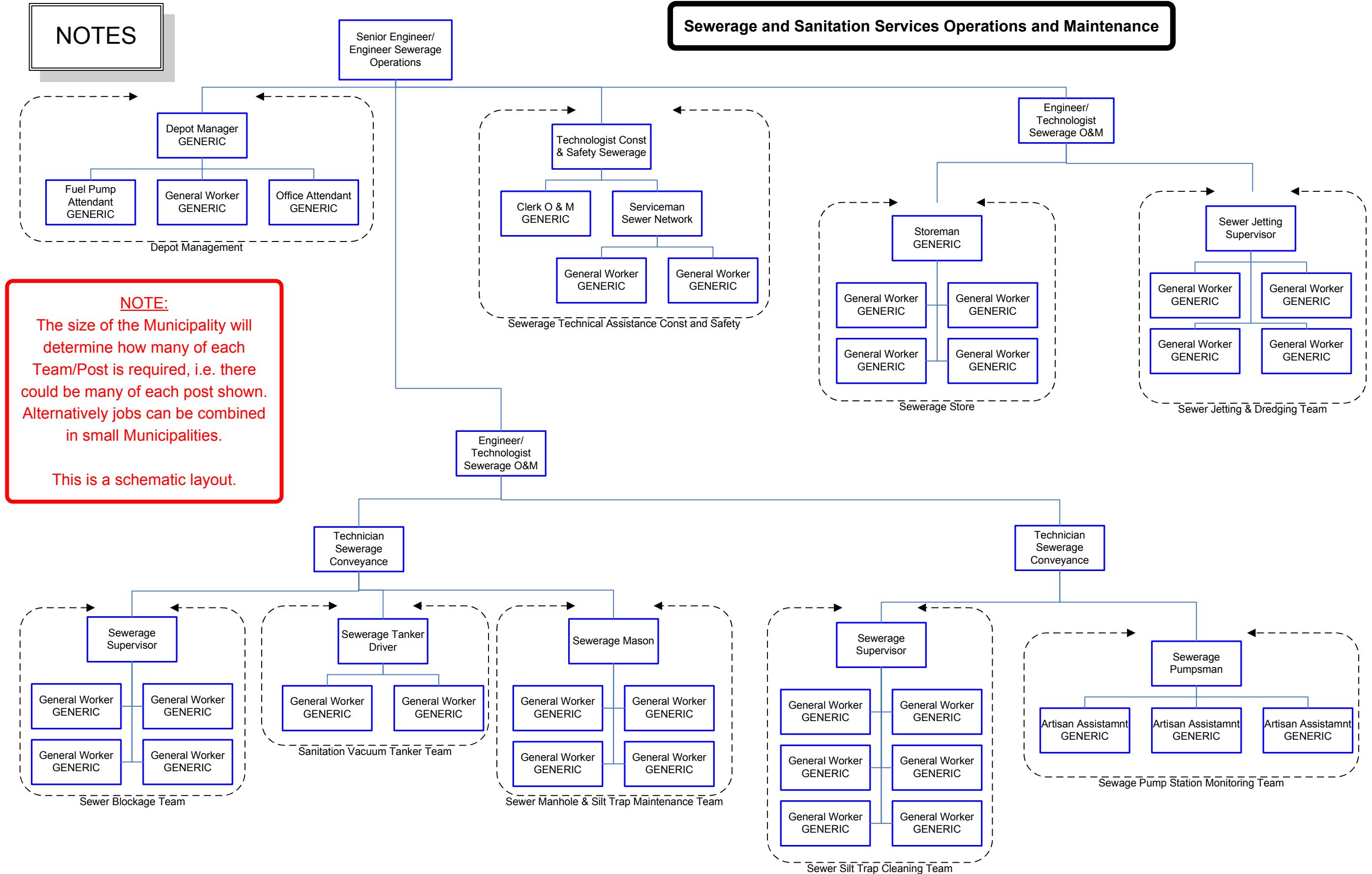
NOTES

Sewerage and Sanitation Services Management and Planning



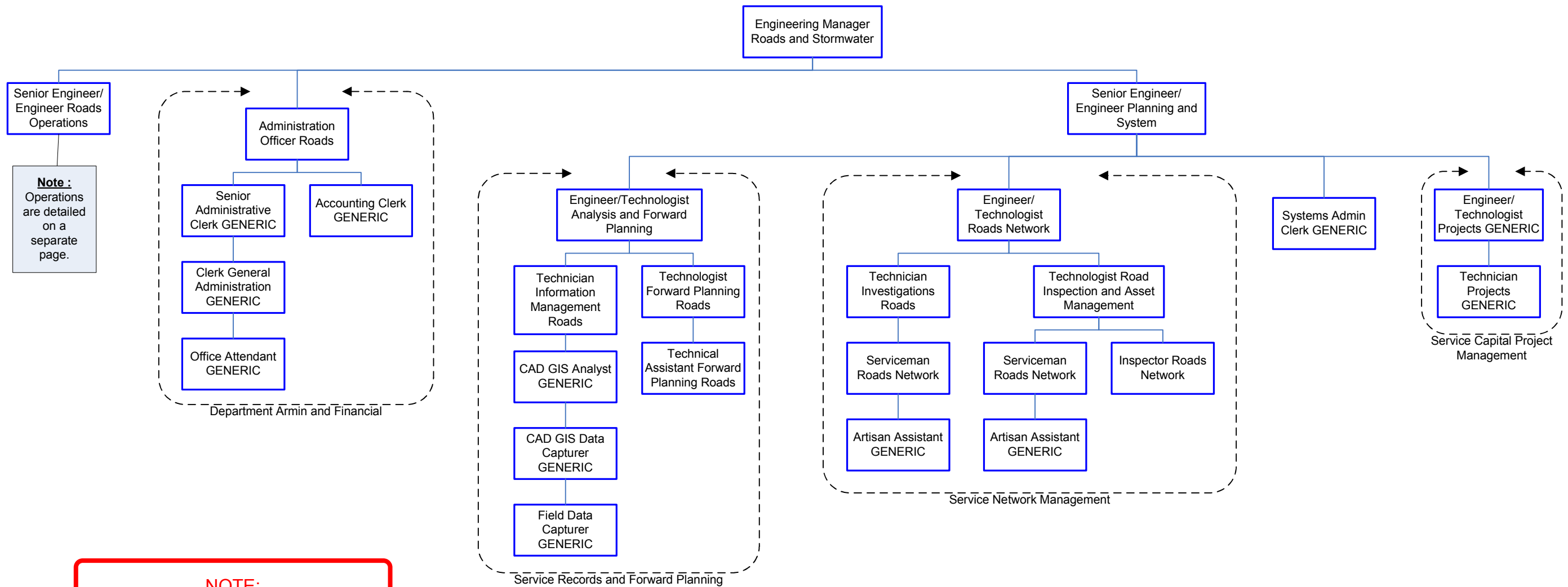
NOTES

Sewerage and Sanitation Services Operations and Maintenance



NOTES

Roads and Stormwater Management and Planning



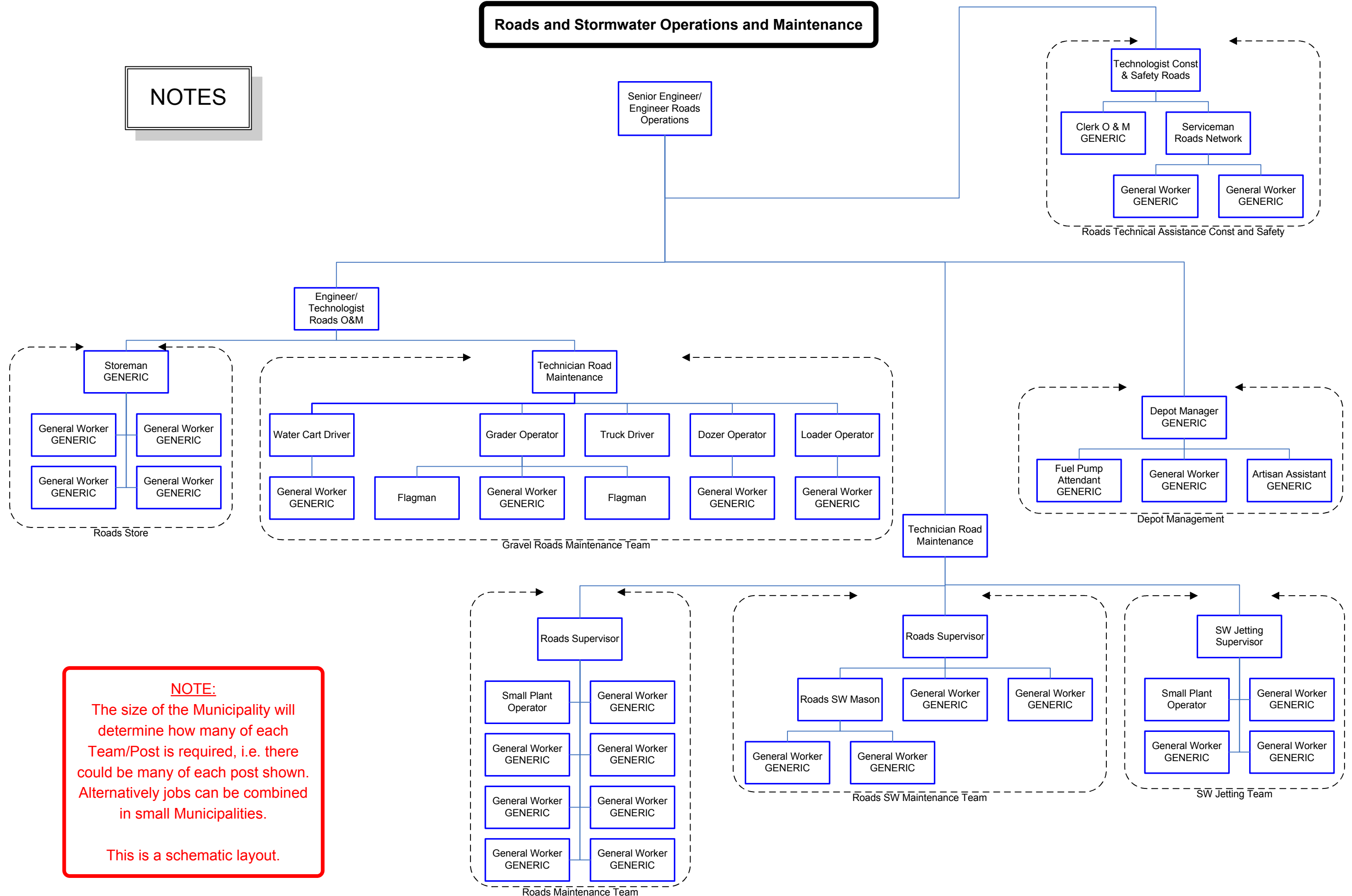
NOTE:

The size of the Municipality will determine how many of each Team/Post is required, i.e. there could be many of each post shown. Alternatively jobs can be combined in small Municipalities.

This is a schematic layout.

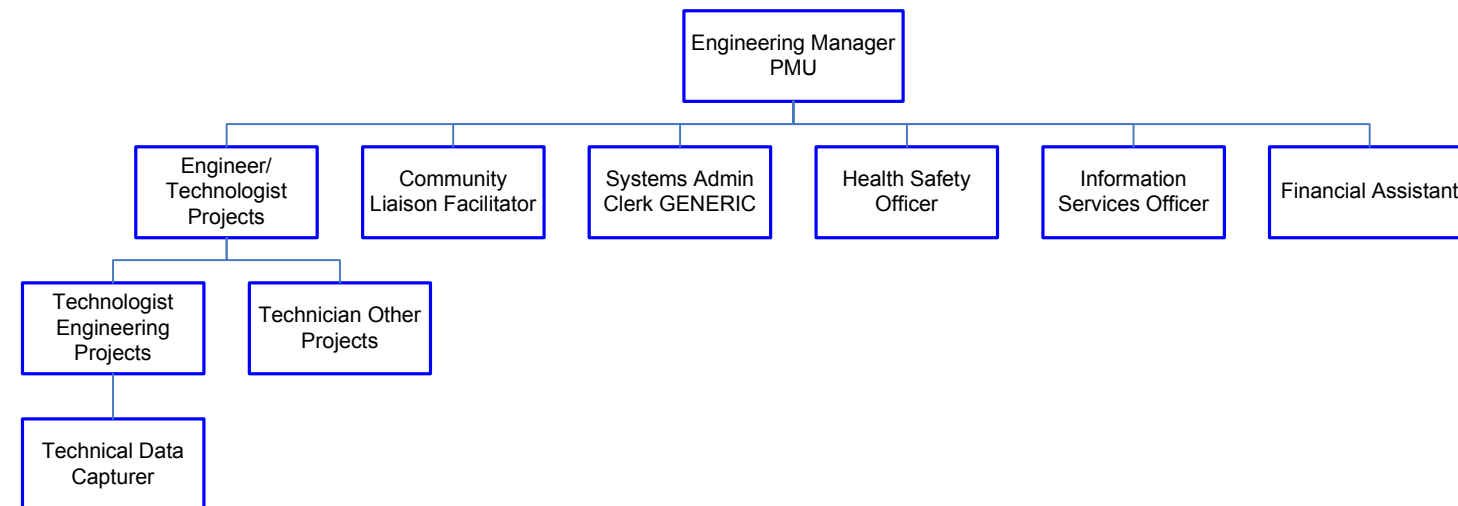
NOTES

Roads and Stormwater Operations and Maintenance



NOTES

Project Management Unit



NOTE:

The size of the Municipality will determine how many of each Team/Post is required, i.e. there could be many of each post shown. Alternatively jobs can be combined in small Municipalities.

This is a schematic layout.

NOTES

Conventions Used

For Civil Engineering Directorate

**Large Municipality
or Metro**

**Annual Budget
>=R500mil**

**Medium or Small
Municipality**

**Annual Budget
<R500mil**

Engineering Degree
Registered with ECSA

Engineering Degree or
B.Tech
Registered with ECSA

Engineering Degree
Registered with ECSA

Engineering Degree or
B.Tech
Registered with ECSA

Engineering Degree or
B.Tech
Registered with ECSA

B.Tech or Diploma
Registered with ECSA

B.Tech or Diploma
Registered with ECSA

Competence Profiles for Large Municipality

